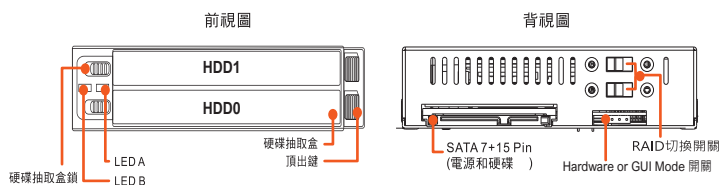


RAIDON

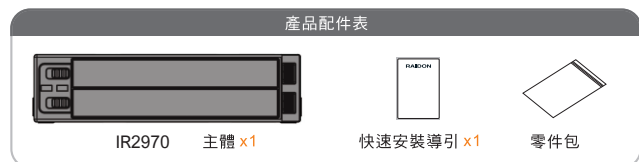
iR2970 快速安裝導引

產品示意圖與配件表



NOTE 當硬碟鎖位於右邊時，硬碟抽取盒將處於鎖住狀態，此時請勿按壓「頂出鍵」，以避免抽取盒及硬碟所受到損傷。

打開包裝外盒後，包裝內容應包含下列組件：



- 請先確認相關配件與產品本身是否有受損或是缺少配件，若有任何疑問，請與您的經銷商或業務人員聯絡。
- 請前往官網 (www.raidon.com.tw) 下載說明書、驅動程式以及其餘相關資源



V1.0 (APR. 2023)

1

燈號說明

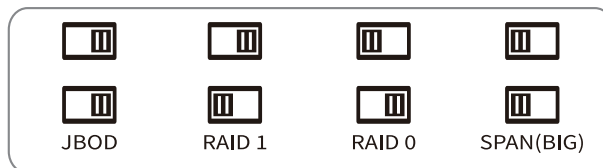
對應		
LED A	HDD 1	
LED B	HDD 0	
狀態	硬碟狀態燈	蜂鳴器
硬碟閒置	藍燈恆亮	N/A
資料存取	紫燈閃爍	N/A
無硬碟 硬碟故障	紅燈恆亮	鳴叫
資料重建 來源碟	藍燈恆亮	N/A
資料重建 目標碟	紅燈閃爍	N/A

※ 在 Hardware Mode, JBOD 狀態下如只有一顆 HDD, 藍色燈號會 OFF, Access 時紅色燈號會閃爍

硬碟安裝

- 請使用背板上的 RAID 控制鍵來選擇 RAID 模式，原廠預設值為 RAID 1 模式。另使用 Hardware or GUI 開關來切換設定，原廠預設值為 Hardware 模式。

RAID 模式切換設定



Hardware or GUI 模式切換設定



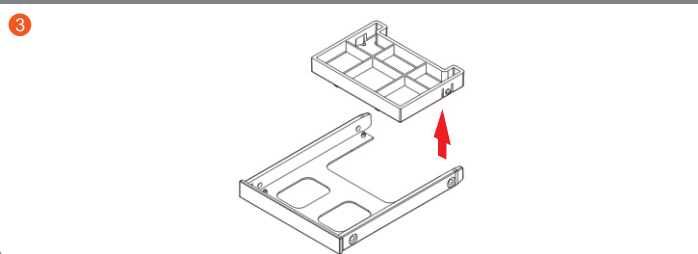
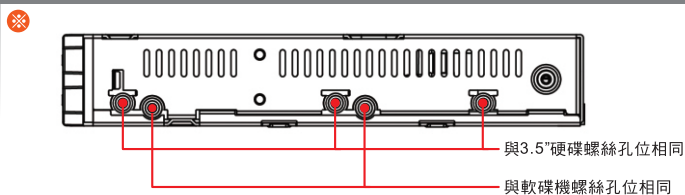
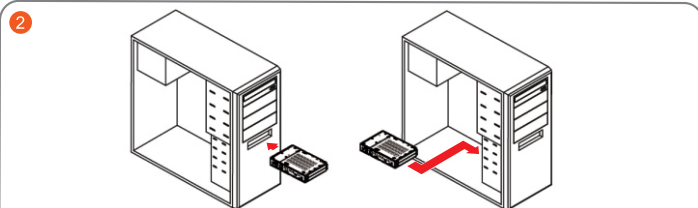
- ※ RAID 1 下，需要同時裝入兩顆硬碟
- ※ RAID 1 下，初次使用會自動先進行資料重建一次 (HDD 0 >> HDD1)

2

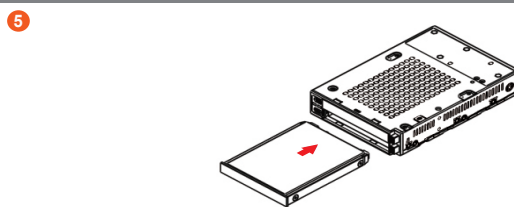
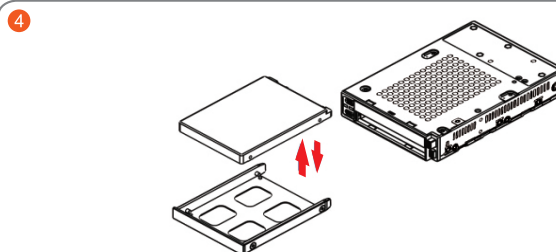
- 將主體裝置在機殼上，連接相關連接線，並確認固定螺絲是否鎖上。請使用零件包中的螺絲

※ 螺絲孔位說明

- 取出抽取盒 (Tray)，將保護抽取盒用的內置塑膠假硬碟取出。塑膠假硬碟主要是保護尚未裝上硬碟的抽取盒，一旦抽取盒裝上了硬碟，塑膠假硬碟即失去作用。
- 將您的硬碟安裝至抽取盒上，並確認硬碟固定螺絲是否鎖上，以免不必要的移動對硬碟造成損傷。請使用零件包中的 M3*4 螺絲。
- 確認完成後請插回抽取盒，並確認抽取盒確實插入且固定在適當的位置。



3



- 硬碟安裝完成。您可開啟電源進行相關設定與應用。
- 你的作業系統將會自行辨識硬體，辨識成功後請先完成硬碟格式化，完成後即可使用。

感謝您使用 銳鉸科技股份有限公司 的產品。
本手冊裡的資訊在出版前雖然已經被詳細確認，但實際產品規格將已出貨時為準；任何的產品規格或相關資訊更新，請您直接上 www.RAIDON.com.tw 網站查詢，或直接與您的業務聯絡窗口聯繫，本公司將不另行通知。
如果您對 銳鉸科技 的產品有任何疑問，或是想獲得最新產品訊息、使用手冊或軟體，請您聯絡 supporting@raidon.com.tw，我們將儘速回覆您。

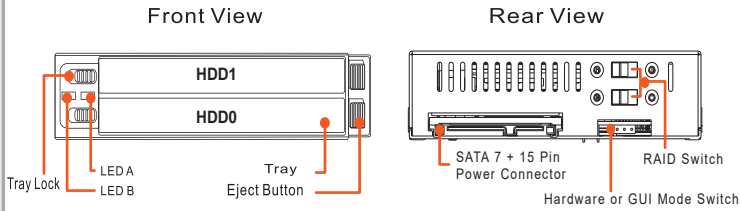
RAIDON 為 銳鉸科技股份有限公司 旗下品牌之一
本說明相關產品內容歸 銳鉸科技股份有限公司 版權所有

4

RAIDON

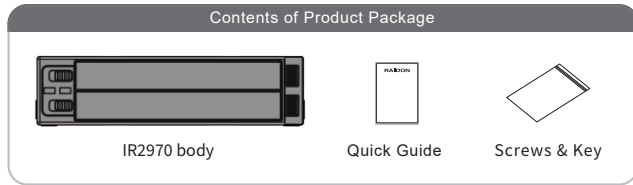
iR2970 Quick Installation Guide

Product Diagrams and Contents of Product Package



NOTE When the "HDD lock" is position to the right, this means the removable HDD tray is locked into place. Do not press the "Eject Button" at this time as this may cause damages to the removable tray and HDD lock.

After you open the outer package, make sure that the following items are contained in the package:



- Please check the product and accessories for any defect or missing parts. If you have any questions, please contact your product supplier.
- Please visit the official website (www.raidon.com.tw) to download user manuals, drivers and other related resources.

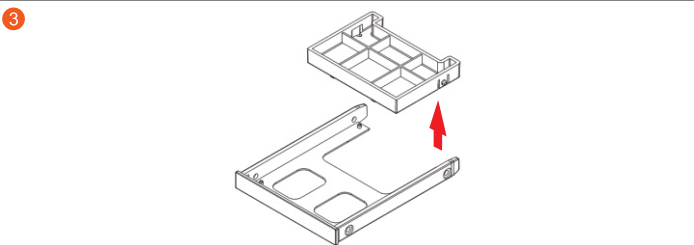
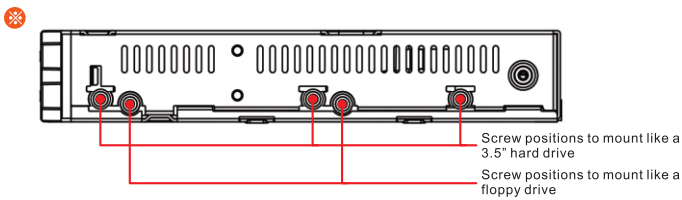
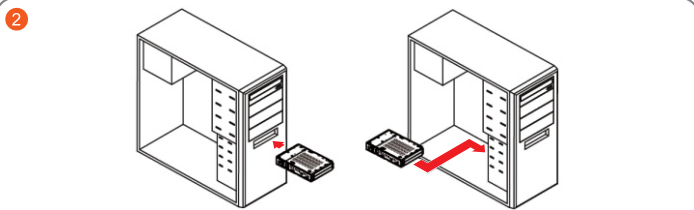


V1.0 (APR. 2023)

1

2. Install the product unit into the computer chassis and make the necessary connections and mount the product unit properly and securely to the bay position desired. (Please use the 6#32x4 case screws contained in the accessories bag).

3. Remove the safety support bracket from the removable HDD tray prior to mounting the hard drive. The bracket will no longer be used after the drive is mounted to the tray; it's only used as a support to avoid damages to the tray.
4. Mount and stabilize the hard drive onto the removable tray to avoid unnecessary drive movements. Please refer to accessory bag and use the enclosed M3*4 screws to mount.
5. Re-insert the removable tray when completed and make sure the tray is securely inserted into the appropriate position.



3

LED Instruction

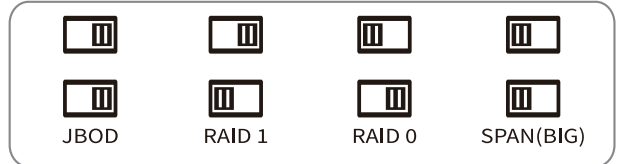
Corresponding LED to HDD Position		
LED A	HDD 1	
LED B	HDD 0	
Status	HDD Status Light	Buzzer
HDD Idle	Blue light always on	N/A
Data access	Purple light flashing	N/A
No hard drive / hard drive failure	Red light always on	ON
Rebuilding - Source	Blue light always on	N/A
Rebuilding - Target	Red light flashing	N/A

※ In Hardware Mode, JBOD status, if there is only one HDD, the blue light will be OFF, and the red light will flash when accessing.

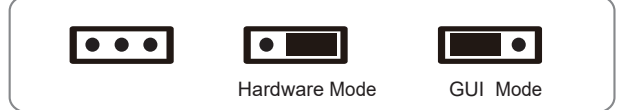
Hardware Installation

1. Please use the RAID control keys on the backplane to select the RAID mode, the factory default is RAID 1 mode. Also use the Hardware or GUI switch to switch settings, the factory default is Hardware mode.

RAID Mode setting

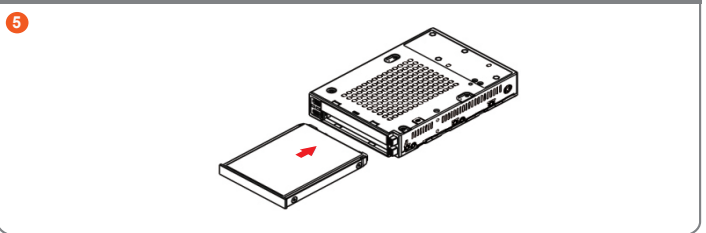
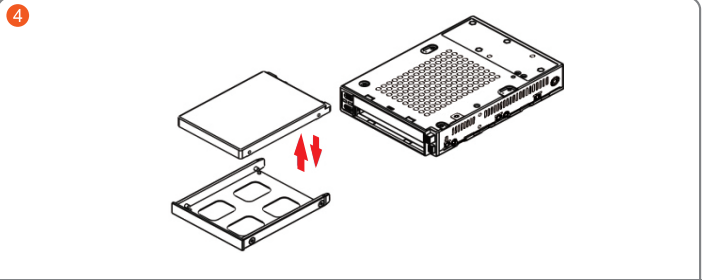


Hardware or GUI Mode setting



- ※ In RAID 1, two hard drives need to be mounted at the same time
- ※ In RAID 1, the data will be rebuilt first (HDD 0->HDD1)

2



6. When hardware installation is completed, you can turn on the power of the main unit to proceed with relevant settings and applications.
7. Installation completed. Your operating system should automatically detect the hard drives within. Please proceed to format the drives. Once formatting is completed, you may then start to operate the device.

Thank you for choosing RAIDON's product.

The information provided in this manual was checked before publication, but the actual product specifications may have changed before shipping; Latest product specifications and updates can be found at www.RAIDON.com.tw or through your sales representative. No separate notifications will be provided by our company.

If you have any questions about RAIDON products or would like to receive the latest product information, instruction manuals, or firmware, please contact Supporting@raidon.com.tw for assistance.

RAIDON is one brand under RAIDON TECHNOLOGY, INC.

All product-related content in this manual are copyrighted by RAIDON TECHNOLOGY, INC.

4